



Integrity. Commitment. Performance.™



# Genoa-Kingston School District 424

PMA Financial Planning Program  
Presented by  
Michael Frances | Senior Financial Advisor  
PMA Financial Network, Inc.  
October 25, 2011

## Process

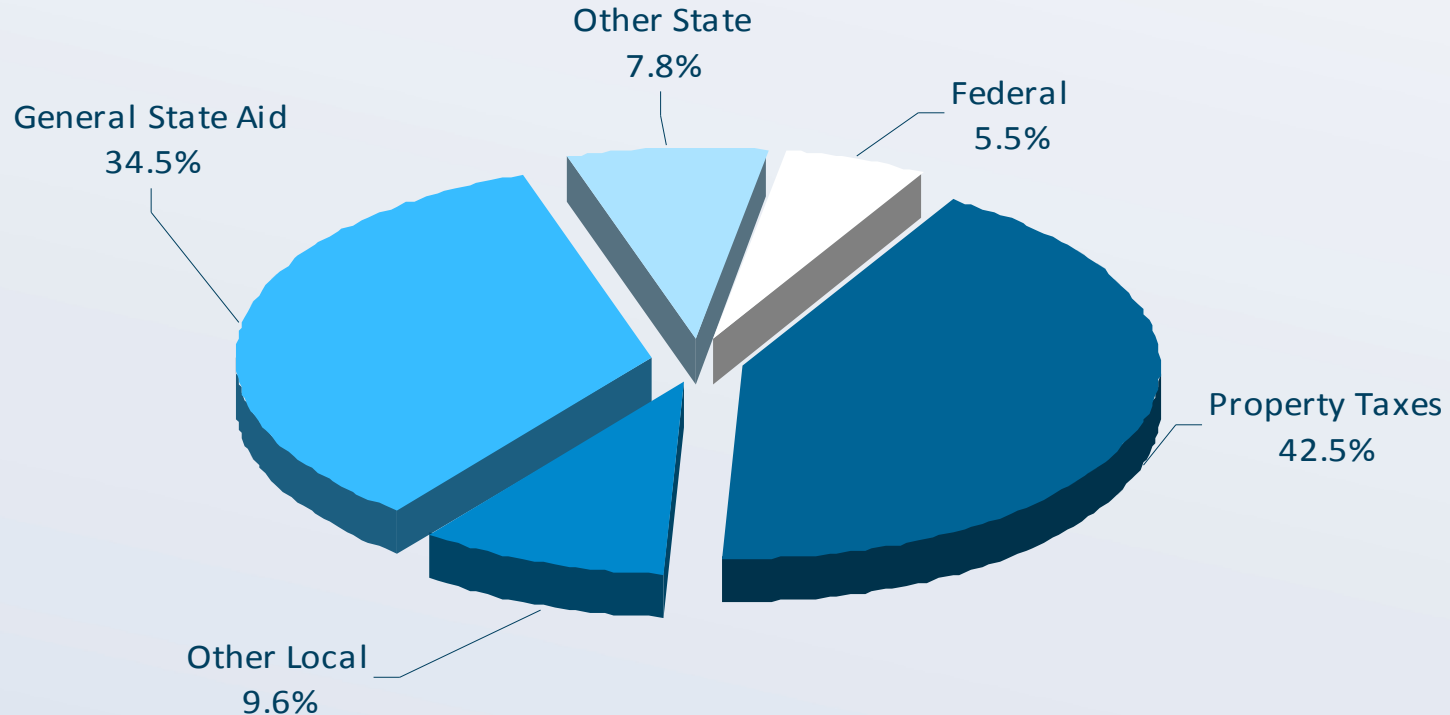
- What is the Financial Planning Program (FPP)?
  - A comprehensive, interactive planning process that can be dynamically updated to assist the District in making important financial decisions.
- How are we going to use the plan?
  - Budget Planning
  - Trend Analysis
  - Set Fiscal Policies
  - Annual Update and Reassessment
  - Scenario Analysis

## Data Elements

- Annual Financial Reports (AFRs) for the past five years
- District's FY12 Budget - Base for financial projections
- Historical Tax Extension Reports
- History of Equalized Assessed Valuations / New Construction
- Current contract and scattergram for certified staff
- Current Salary & Benefits information
- Current student/staffing ratios

# Operating Funds Revenue Budget – \$17,904,766

## REVENUE BY SOURCE DETAIL - FY 2012

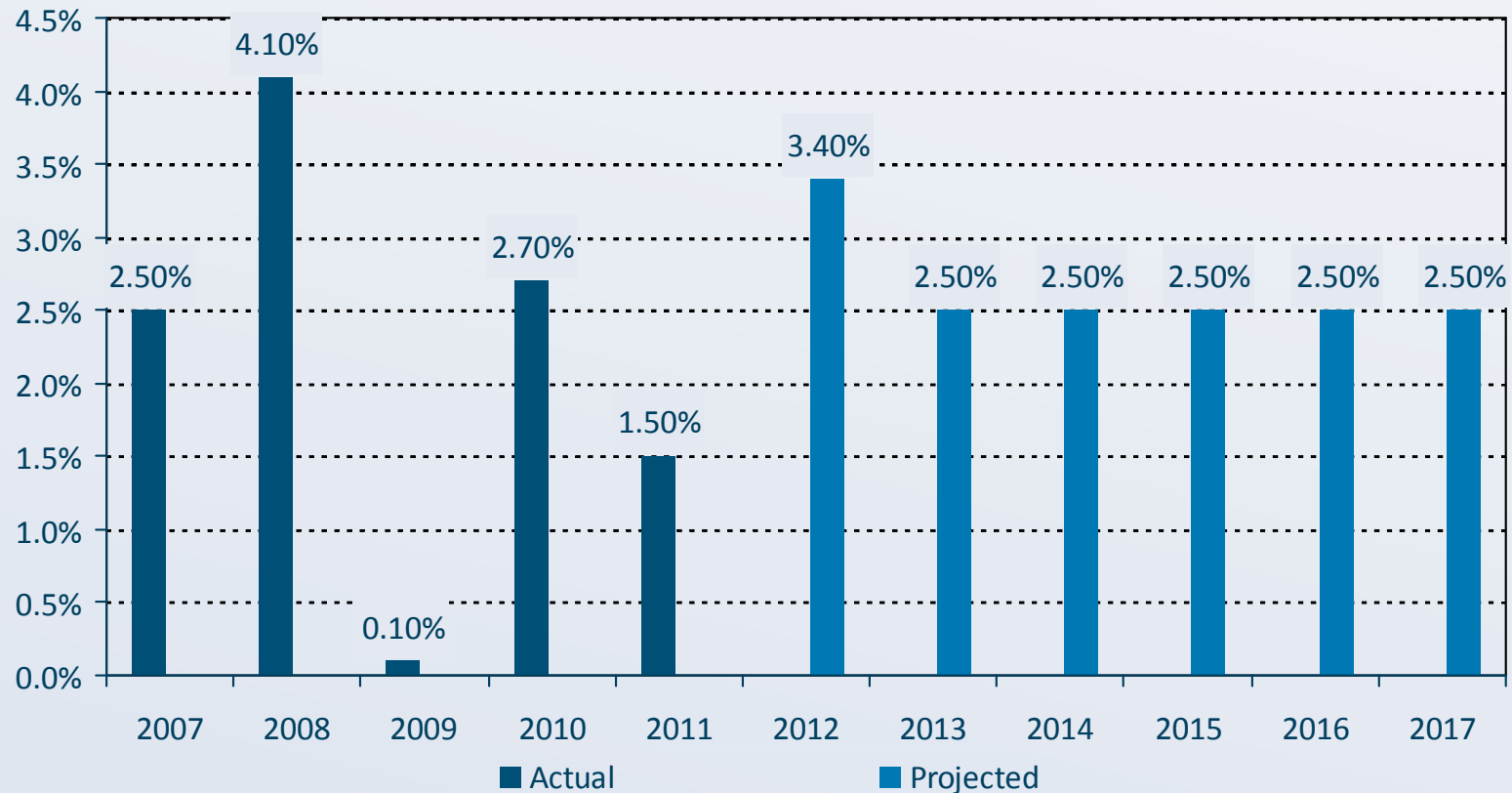


Operating Funds: Educational, Operations & Maintenance, Transportation, IMRF, Working Cash and Tort Funds

Data & Assumptions provided by District

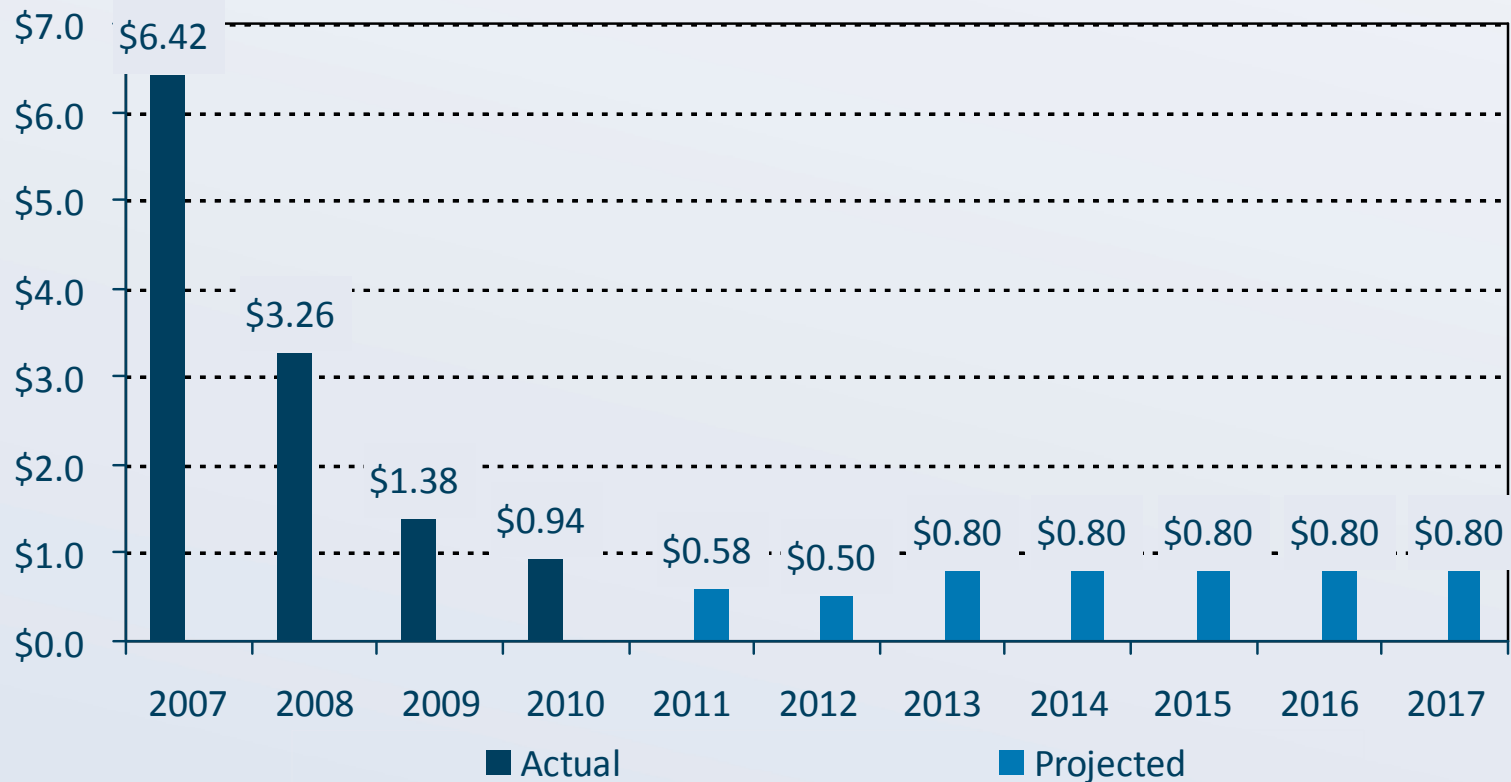
# Revenue Assumptions – Property Taxes

Consumer Price Index (CPI) - Levy Years



# Revenue Assumptions – Property Taxes

## New Growth (In Millions)



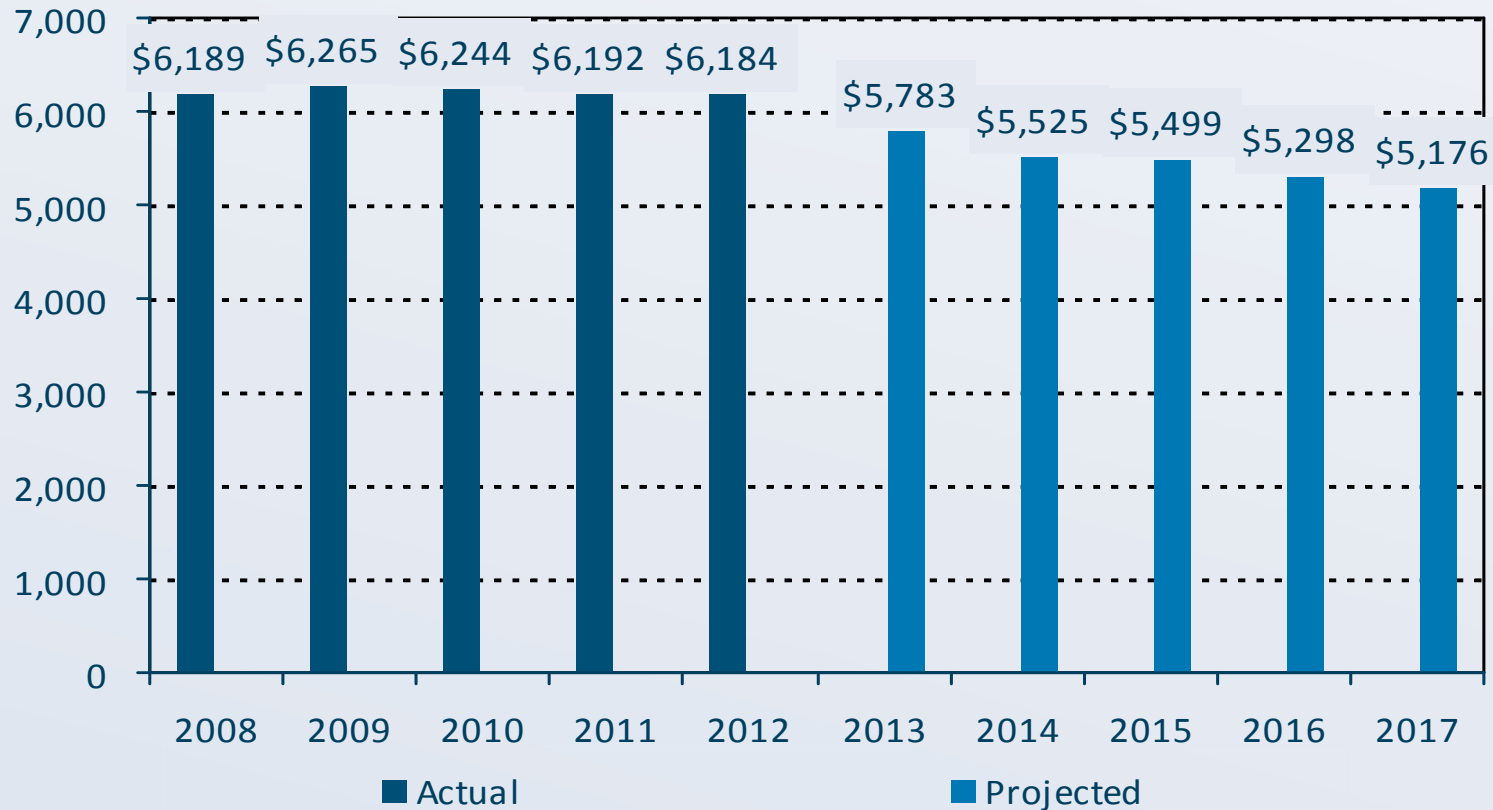
## Revenue Assumptions – Other Local Revenue

- CPPRT:
  - Decreased \$20k in FY13 to current IDOR estimate, then held flat
- Investment Income:
  - 0.25% annual rate of return
- All other local revenues:
  - No increase over current FY12 budget

## Revenue Assumptions – State & Federal

- State Revenue
  - General State Aid (GSA)
    - Factor of enrollment - Average Daily Attendance (ADA)
    - Foundation Level – currently \$6,119
      - \$0 increase projected for FY13 and FY14
      - \$100 annual increases projected for FY15 – FY17
      - Funded each year @ 100% vs. 95% this year
  - Other State Grants
    - No increase over current FY12 budget
- Federal Revenue
  - No increase over current FY12 budget
  - FY13 reduction due to loss of FY12 stimulus carryover (\$108k)

## General State Aid Revenue (in Thousands)

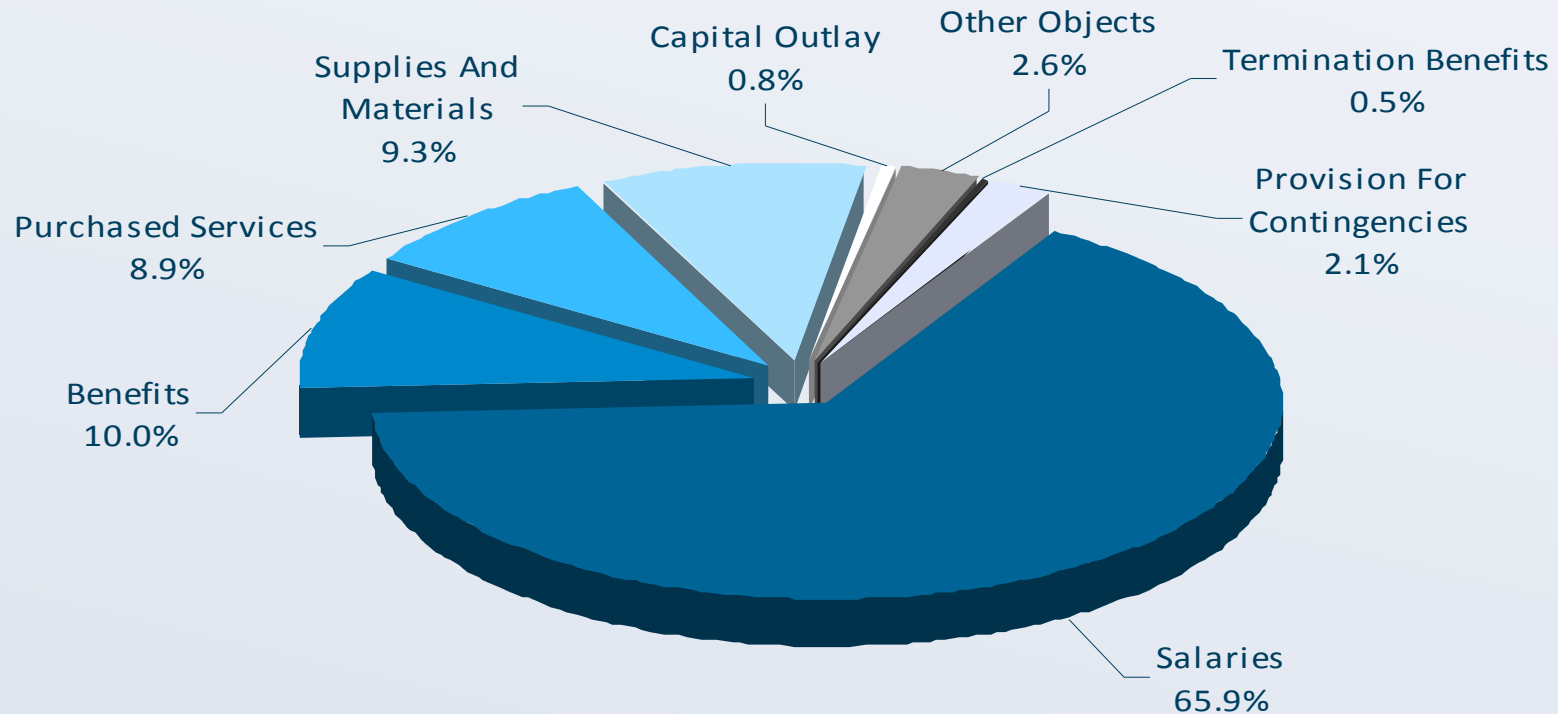


## Revenue – Sensitivity

- Tax Levy:
  - CPI 1%  $\Delta$  = +/- \$77,000
  - New Property: \$1 million  $\Delta$  = +/- \$39,000
- General State Aid:
  - \$100  $\Delta$  to foundation level = +/- \$188,000

# Operating Funds Expense Budget – \$18,378,667

## FY 2012 EXPENDITURES BY OBJECT



Operating Funds: Educational, Operations & Maintenance, Transportation, IMRF, Working Cash and Tort Funds

# Expenditure Assumptions

- Salaries
  - Teachers
    - FY13 - FY15: 2.0% base increase plus step
    - FY16 & FY17: 3.0% base increase plus step
  - Support Staff:
    - FY13 – FY15: 2.0% base increase plus step
    - FY16 & FY17: 3.0% base increase plus step
  - Administration:
    - FY13 – FY15: 2.0% annual increases
    - FY16 & FY17: 3.0% annual increases
- Health Benefits:
  - FY13 - FY17: 10.0% annual increases

## Expenditure Assumptions

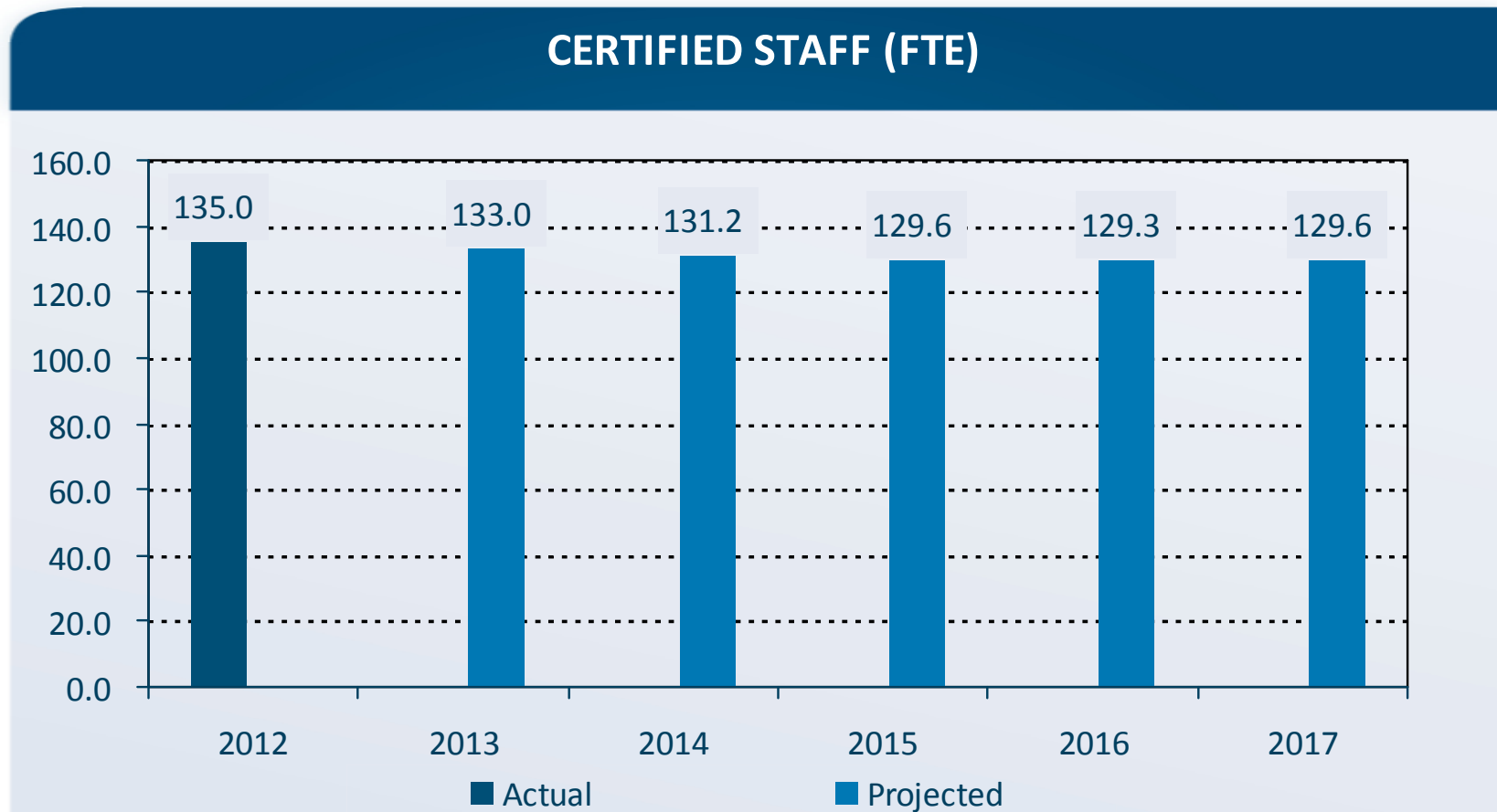
- Purchased Services, & Supplies:
  - FY13 - FY17: 2.0% annual increases
  - Reduction in legal expense budget
- Capital Outlay:
  - FY13 - FY17: No increase over current FY12 budget
- Other (Special Ed Tuition): 5% annual increases FY13 - FY17

# Enrollment Assumptions

## ENROLLMENT HISTORY AND PROJECTIONS



# Staffing Assumptions



Excluding administration

## Additional Assumptions

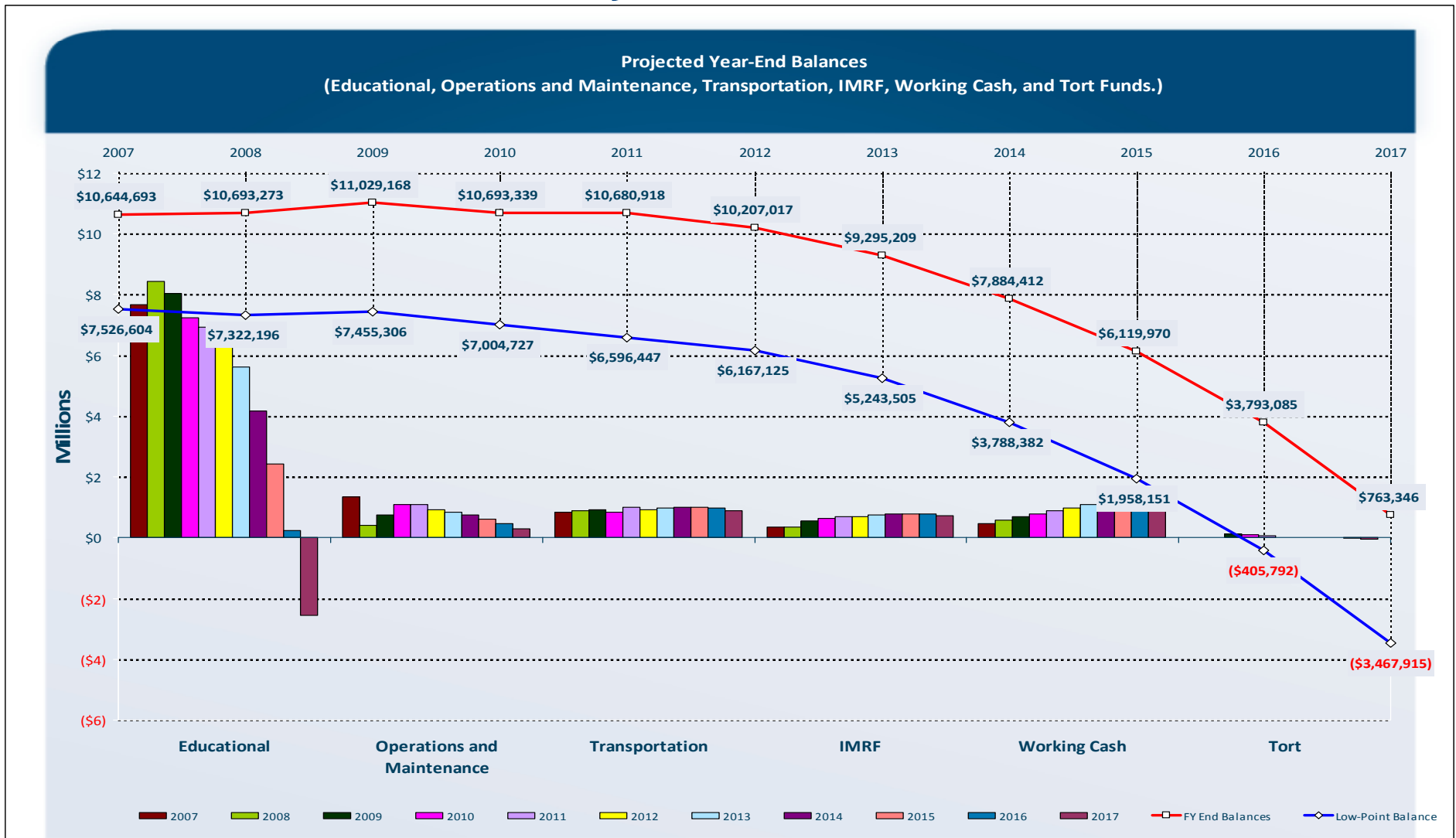
- No legislative changes in school funding
- No change to PTELL (Tax Cap)
- Includes costs and savings from known and projected retirements (19 over next year 5 years), with new teachers brought in at the BA+9 Lane Step 4 (\$41,344 for FY12)
- Current FY12 Budget is accurate base for projections

# Projected Revenues vs. Expenditures - Aggregate

	BUDGET		REVENUE / EXPENDITURE PROJECTIONS									
	FY 2012	FY 2013	% chg	FY 2014	% chg	FY 2015	% chg	FY 2016	% chg	FY 2017	% chg	
<b>REVENUE</b>												
Local	\$9,328,500	\$9,355,530	0.29%	\$9,625,505	2.89%	\$9,874,009	2.58%	\$10,136,353	2.66%	\$10,405,697	2.66%	
State	\$7,584,066	\$7,182,964	-5.29%	\$6,924,519	-3.60%	\$6,898,808	-0.37%	\$6,697,734	-2.91%	\$6,576,165	-1.82%	
Federal	\$992,200	\$884,200	-10.88%	\$884,200	0.00%	\$884,200	0.00%	\$884,200	0.00%	\$884,200	0.00%	
Other	\$0	\$0		\$0		\$0		\$0		\$0		
<b>TOTAL REVENUE</b>	<b>\$17,904,766</b>	<b>\$17,422,694</b>	<b>-2.69%</b>	<b>\$17,434,225</b>	<b>0.07%</b>	<b>\$17,657,017</b>	<b>1.28%</b>	<b>\$17,718,287</b>	<b>0.35%</b>	<b>\$17,866,062</b>	<b>0.83%</b>	
<b>EXPENDITURES</b>												
Salary and Benefit Costs	\$13,938,520	\$14,250,609	2.24%	\$14,691,958	3.10%	\$15,185,923	3.36%	\$15,718,111	3.50%	\$16,484,116	4.87%	
Other	\$4,440,147	\$4,083,892	-8.02%	\$4,153,064	1.69%	\$4,235,536	1.99%	\$4,327,062	2.16%	\$4,411,684	1.96%	
<b>TOTAL EXPENDITURES</b>	<b>\$18,378,667</b>	<b>\$18,334,501</b>	<b>-0.24%</b>	<b>\$18,845,022</b>	<b>2.78%</b>	<b>\$19,421,459</b>	<b>3.06%</b>	<b>\$20,045,173</b>	<b>3.21%</b>	<b>\$20,895,801</b>	<b>4.24%</b>	
<b>SURPLUS / DEFICIT</b>	<b>(\$473,901)</b>	<b>(\$911,808)</b>		<b>(\$1,410,797)</b>		<b>(\$1,764,442)</b>		<b>(\$2,326,885)</b>		<b>(\$3,029,739)</b>		
<b>OTHER FINANCING SOURCES/USES</b>												
Transfer Among Funds (Net)	\$0	\$0		\$0		\$0		\$0		\$0		
Sale of Bonds	\$0	\$0		\$0		\$0		\$0		\$0		
Other Financing Sources	\$0	\$0		\$0		\$0		\$0		\$0		
Other Financing Uses	\$0	\$0		\$0		\$0		\$0		\$0		
<b>TOTAL OTHER FIN. SOURCES/USES</b>	<b>\$0</b>	<b>\$0</b>		<b>\$0</b>		<b>\$0</b>		<b>\$0</b>		<b>\$0</b>		
<b>SURPLUS / DEFICIT INCL. OTHER FIN. SOURCES</b>	<b>(\$473,901)</b>	<b>(\$911,808)</b>		<b>(\$1,410,797)</b>		<b>(\$1,764,442)</b>		<b>(\$2,326,885)</b>		<b>(\$3,029,739)</b>		
<b>BEGINNING FUND BALANCE</b>	<b>\$10,680,918</b>	<b>\$10,207,017</b>		<b>\$9,295,209</b>		<b>\$7,884,412</b>		<b>\$6,119,970</b>		<b>\$3,793,085</b>		
<b>PROJECTED YEAR END BALANCE</b>	<b>\$10,207,017</b>	<b>\$9,295,209</b>		<b>\$7,884,412</b>		<b>\$6,119,970</b>		<b>\$3,793,085</b>		<b>\$763,346</b>		
<b>FUND BALANCE AS % OF EXPENDITURES</b>	<b>55.54%</b>	<b>50.70%</b>		<b>41.84%</b>		<b>31.51%</b>		<b>18.92%</b>		<b>3.65%</b>		

Operating Funds: Educational, Operations & Maintenance, Transportation, IMRF, Working Cash and Tort Funds

# Historic / Projected Fund Balances



The information contained herein is solely intended to suggest/discuss potentially applicable financing applications and is not intended to be a specific buy/sell recommendation, nor is it an official confirmation of terms. Any terms discussed herein are preliminary until confirmed in a definitive written agreement.

The analysis or information presented herein is based upon hypothetical projections and/or past performance that have certain limitations. No representation is made that it is accurate or complete or that any results indicated will be achieved. In no way is past performance indicative of future results. Changes to any prices, levels, or assumptions contained herein may have a material impact on results. Any estimates or assumptions contained herein represent our best judgment as of the date indicated and are subject to change without notice. Examples are merely representative and are not meant to be all-inclusive.

The information set forth herein was gathered from sources which we believe, but do not guarantee, to be accurate. Neither the information, nor any options expressed, constitute a solicitation by us for purposes of sale or purchase of any securities or commodities. Investment/financing decisions by market participants should not be based on this information.

You should consider certain economic risks (and other legal, tax, and accounting consequences) prior to entering into any type of transaction with PMA Securities, Inc. or PMA Financial Network, Inc. It is imperative that any prospective client perform its own research and due diligence, independent of us or our affiliates, to determine suitability of the proposed transaction with respect to the aforementioned potential economic risks and legal, tax, and accounting consequences. Our analyses are not and do not purport to be appraisals of the assets, or business of the District or any other entity. PMA makes no representations as to the actual value which may be received in connection with a transaction nor the legal, tax, or accounting effects of consummating a transaction. PMA cannot be relied upon to provide legal, tax, or accounting advice. You should seek out independent and qualified legal, tax, and accounting advice from outside sources.

**If posted on a webpage, this information has been prepared for informational and educational purposes and does not constitute a solicitation to purchase or sell securities, which may be done only after client suitability is reviewed and determined. Services offered by PMA Securities, Inc. and this registered representative presenter, in particular, are available only in the following state: IL. This information is not an advertisement of services available in any state other than those listed above.**